



DA42 Multi-Purpose Platform laser scanning mission

Airborne Laser Scanning

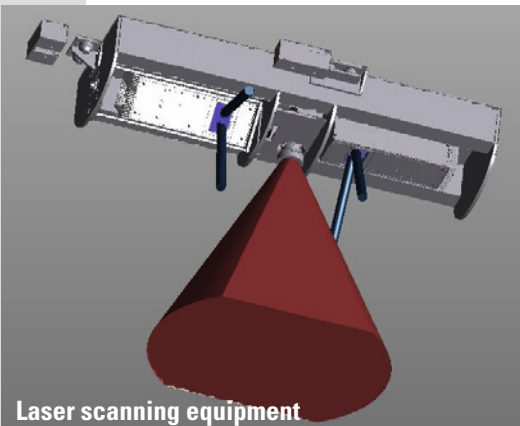
Efficient and Precise

Airborne laser scanning using Diamond Airborne Sensing's line of Multi-Purpose Platform (MPP) aircraft makes it possible to efficiently and precisely survey large expanses of terrain, industrial grounds, and agricultural and city zoning.

The fully integrated airborne laser scanner system uses one or two state-of-the-art echo digitized *RIEGL* laser scanners to geometrically map the earth's surface with an accuracy of less than 10 cm. Digital Terrain Models (DTM) and Digital Surface Models (DSM) are created through the transmission of laser pulses and the analysis of echo signals with respect to duration and intensity.

The laser scanner(s) are mounted to the aircraft in stable, light-weight detachable pods. The operating equipment is located in specialized equipment compartments and wiring and cables are routed through tunnels along the aircraft.

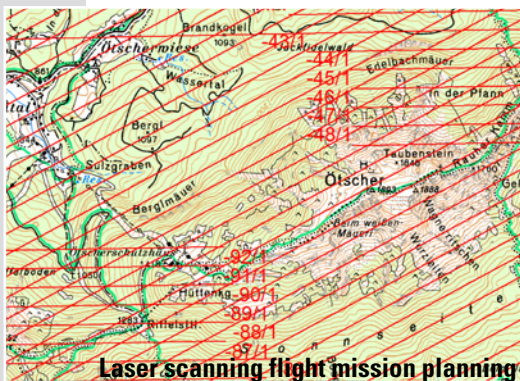




Laser scanning equipment



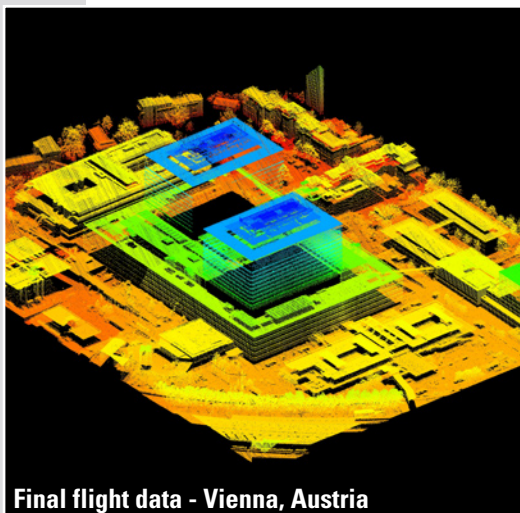
RIEGL Laser Measurement Systems BP 560



Laser scanning flight mission planning

Laser scanning serves a wide range of purposes

- Flood scenarios
- Avalanche, landslide and rock slide simulation
- Planning criteria for infrastructure projects
- Dam measurement
- Automated compilation of orthophotos and aerial images
- Power line maintenance
- Acquisition of topographic information
- Digital Surface Modelling and Digital Terrain Modelling



Final flight data - Vienna, Austria

The MPP aircraft are ideally suited for

- Corridor flights
- Difficult mountainous terrain



Diamond Airborne Sensing GmbH
 Ferdinand Graf von Zeppelin Strasse 1
 2700 Wiener Neustadt, Austria
 T +43 2622 26700 181 • F +43 2622 26700 189
 info@diamond-sensing.com
 www.diamond-sensing.com



HK36 Multi-Purpose Platform